

the Parkview

- Bedrooms:** 2
- Baths:** 2.5
- Garage:** 2-car
- Kitchen:** Open floor plan
Appliances included
- Fireplace:** Included
- Washer/Dryer:** Included
- Den:** Included
- Lower level:** Finished or unfinished
(see reverse side for lower level)

Total gross sq. ft.: 4,185
(Does not include garage)

1st floor gross sf.: 2,082

Lower level gross*: 2,103

Garage gross sf.: 586

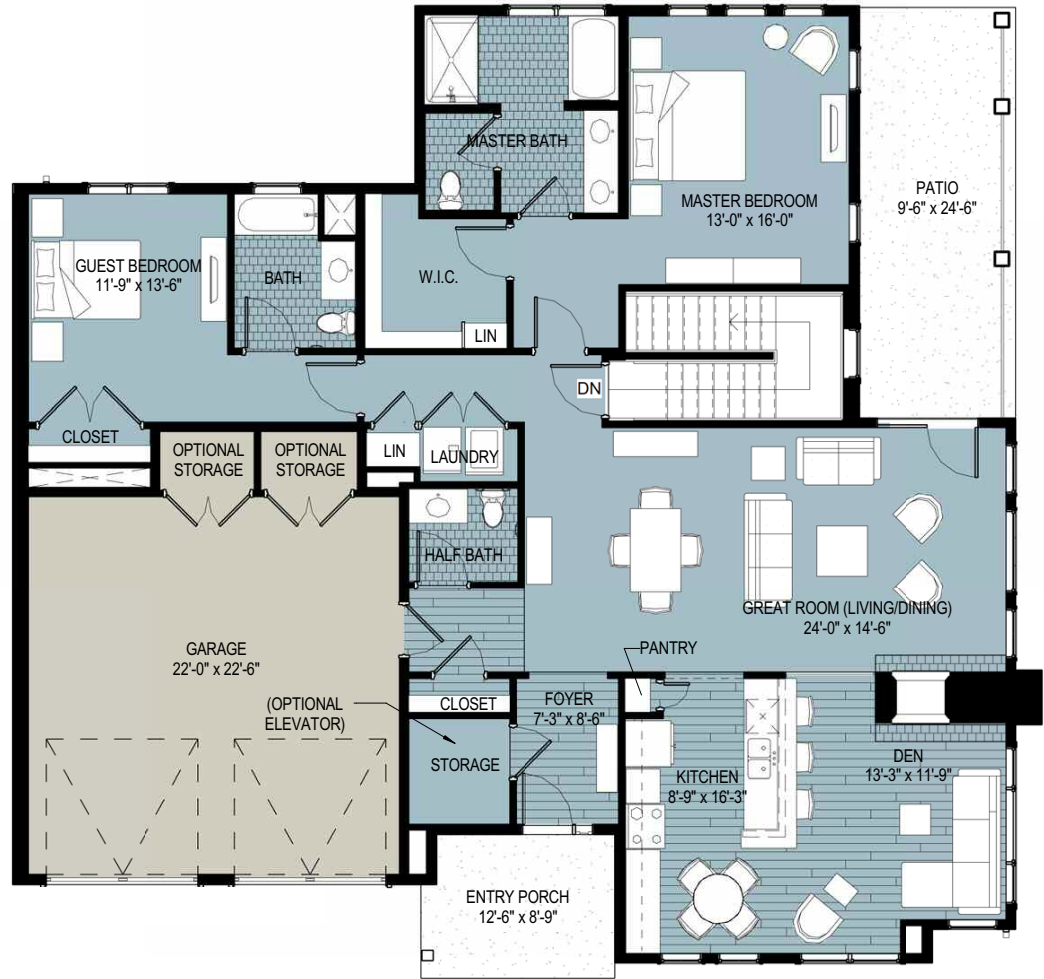
Total net sq. ft.: 4,042

1st floor net sf.: 1,939

Garage net sf.: 548

- Options:** Screened porch
- Sunroom
- Elevator
- Several finish packages
- Finished lower level

*Unfinished



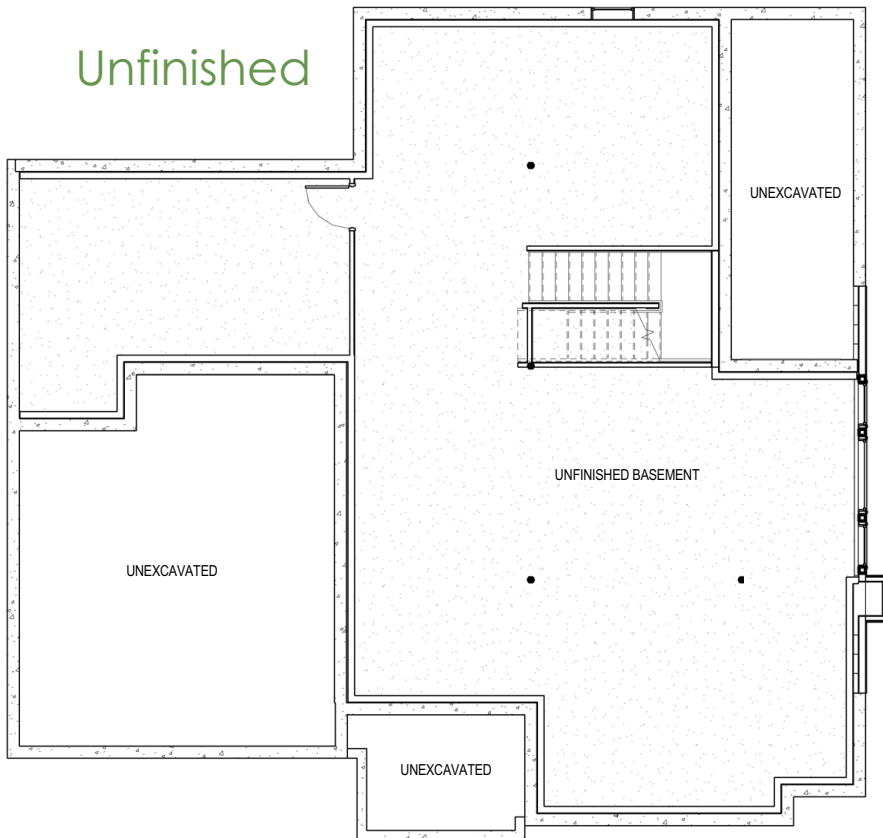
See reverse side for lower level detail. ►



the Parkview Lower Level Option

approximately 2,103 gross sq. ft. (unfinished)

Unfinished



Finished

